

BASS LAKE YOSEMITE NEWS

BASS LAKE REALTY
REAL ESTATE SALES • PROPERTY MANAGEMENT

CalDRE #01477156

January 2024

LAKE LEVEL UPDATE

As of December 20, 2023 -24' 7" @3352' 1"
Elevation (full) 3376' 8"



BASS LAKE REALTY OFFICE

UPCOMING BASS LAKE EVENTS

GLICE ICE SKATING	10:00am-2:00pm & 4:00-8:00pm
The Pines Resort	Daily through March 31st
Call 1-800-350-7463 for information	
WINTER CONCERT & DINNER	January 27th
Pines Lakeview Room	
Call 559-642-3141 for information	
SUPER BOWL PARTY	February 11th
The Pines Bar	
Call 559-642-3141 for information	
VALENTINE'S DINNER	February 14th
Ducey's	
Call 559-692-8857 for reservations	



What do we offer you?

Local knowledge -

It works in your best interest...

Call today for your

FREE home Evaluation!

Carbon Monoxide Poisoning Prevention

CO poisoning is entirely preventable. Protect yourself and your family by learning the symptoms of CO poisoning and how to prevent it.

When winter temperatures plummet and home heating systems run for hours the risk of carbon monoxide (CO) poisoning increases.

Every year, at least 420 people die in the U.S. from accidental CO poisoning. More than 100,000 people in the U.S. visit the emergency department each year due to accidental CO poisoning. There are steps you can take to help protect yourself and your household from CO poisoning.

CO is found in fumes produced by furnaces, kerosene heaters, vehicles "warmed up" in garages, stoves, lanterns, and gas ranges, portable generators, or by burning charcoal and wood. CO from these sources can build up in enclosed or partially enclosed spaces. People and animals in these spaces can be poisoned and can die from breathing CO.

How to Recognize CO Poisoning

The most common symptoms of CO poisoning are headache, dizziness, weakness, nausea, vomiting, chest pain, and confusion. People who are sleeping or who have been drinking alcohol can die from CO poisoning before ever having symptoms.

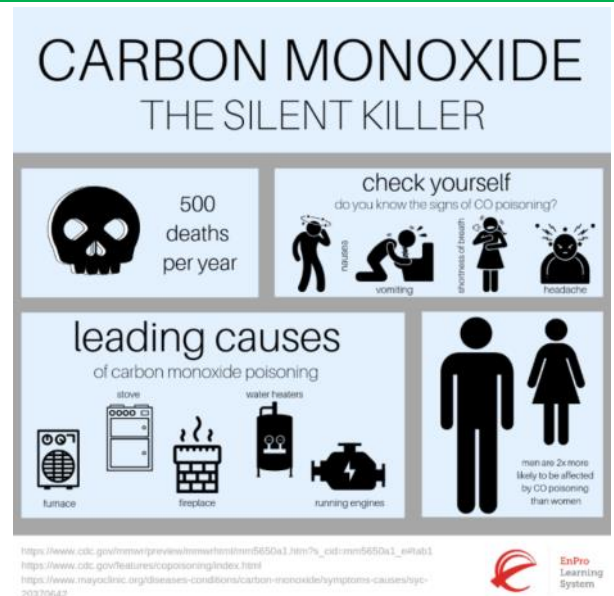
CO Poisoning Prevention Tips



- Check or change the batteries in your CO detector every six months. If you don't have a battery-powered or battery

back-up CO detector, buy one soon.

- Have your heating system, water heater and any other gas, oil, or coal burning



appliances serviced by a qualified technician every year.

- Keep vents and flues free of debris. Debris can block ventilation lines.
- Never leave the motor running in a vehicle parked in an enclosed or partially enclosed space, such as a garage.
- Never run a motor vehicle, generator, pressure washer, or any gasoline-powered engine less than 20 feet from an open window, door, or vent where exhaust can vent into an enclosed area.
- Never use a charcoal grill, hibachi, lantern, or portable camping stove inside a home, tent, or camper.
- Never run a generator, pressure washer, or any gasoline-powered engine inside a basement, garage, or other enclosed structure, even if the doors or windows are open.
- If you suspect CO poisoning, call 911 or a health care professional right away. **CO poisoning is entirely preventable.** You can protect yourself and your family by learning the symptoms of CO poisoning and how to prevent it.

For more information, please visit <https://www.cdc.gov/co/default.htm>

FIRE HAZARD REDUCTION BURNING

Section 4291 of the California Public Resources Code (PRC 4291) requires the removal of vegetation that could transmit fire from the natural growth to a building or structure. The purpose is to maintain properties within the State Responsibility Area in a fire safe condition by providing a defensible area should a wildfire occur.

Per this regulation, Local Fire Agencies require:

- The clearance of 100 feet or more of flammable vegetation from around buildings. On steeper parcels, please consult with your local forestry or fire protection agency on fire safe clearance requirements. Insurance companies also have authority to require firebreaks and clearances of more than 100 feet.
- Maintaining 10 to 15 feet of spacing, both vertically and horizontally, between shrubs, large plants, and trees
- Keeping trees trimmed at least 10 feet from any chimney and trimming all dead limbs hanging over your house or garage
- Removing all needles and leaves from roofs, eaves, and rain gutters
- Regular watering and weeding of landscaping to keep it fire safe



Consultation with your local forestry or fire protection agency for additional requirements. PRC 4291 DOES NOT REQUIRE that the vegetation be disposed of by open burning. Therefore, the District strongly encourages the public to first consider the alternatives to open burning, especially if the proposed site is in or near sensitive populated areas.

Please consider these alternatives:

- Chipping
- Mulching
- Composting
- Recycling

Hazard Reduction Burning

Although open burning is generally prohibited, District Rule 4106 (Prescribed Burning and Hazard Reduction Burning) allows the open burning of flammable vegetation that has been removed and cleared away from buildings or structures in compliance with local ordinances to reduce fire hazard pursuant to PRC 4291. Hazard Reduction Burning is only permitted in the State Responsibility Area, which does NOT include most areas on the valley floor. Such burns must abide by the requirements of District Rule 4106 and the Guidelines for Hazard Reduction Burning, including obtaining a burn permit and observing daily burn declarations. Visit <https://ww2.valleyair.org/compliance/hazard-reduction-burning/> for more information.

Daily burn notice: 1-877-HAZ-BURN

Call one of our LOCAL Professional REALTORS®

Serving Madera County Since 1970 • Members of California Regional & Fresno MLS

Marketing Listings to over 144,000 Agents State Wide



Beth Carver, GRI
Managing Broker
(559) 658-1784
CalDRE# 01033334



Steve Welch
Broker/Owner
(559) 642-3610
CalDRE# 00429630



Dee Salazar
REALTOR® Associate
(559) 415-8002
CalDRE# 01934443



Nancy Gunning
Broker Associate
(559) 760-5480
CalDRE# 01237504



Kara Shearer
Broker Associate
(559) 676-0442
CalDRE# 02020397



Darlene Herr
REALTOR® Associate
(559) 760-8141
CalDRE# 02071769



Johnny Herr
REALTOR® Associate
(559) 760-6142
CalDRE# 02081978



Kirsten Englund
REALTOR® Associate
(559) 676-1901
CalDRE# 01307417



Sharon Brantley
REALTOR® Associate
(408) 406-6996
CalDRE# 1245423



Lily Niblett
REALTOR® Associate
(559) 289-8486
CalDRE# 02200789



© Bass Lake Realty Inc. (559) 642-3610
54335 North Shore Rd 432/#349 • Bass Lake, California 93604
www.BassLakeRealty.com CalDRE# 01477156

